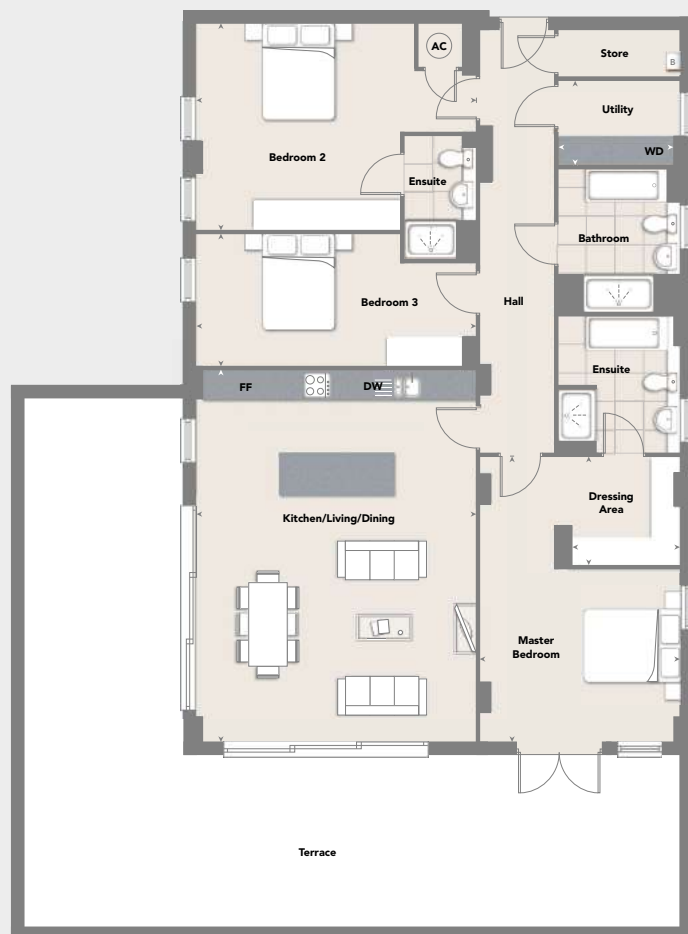


## The Hansom – Plot 29

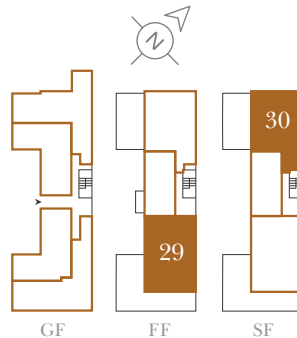
- 3 double bedroom, 3 bathroom apartment • Private wrap around terrace
- Access to terrace via triple sliding doors from dual aspect kitchen/living/dining area
- French doors leading to terrace from master bedroom • Ensuite and dressing area to master bedroom • Ensuite to bedroom 2 • Separate utility and storage space

Total Floor Area 150 sq m 1,615 sq ft  
Total Terrace Area 96.8 sq m 1,042 sq ft



### FIRST FLOOR

Kitchen/Living/Dining 7.80m x 5.85m 25'7" x 18'10"  
Utility 2.42m x 1.78m 7'11" x 5'10"  
Master Bedroom 5.98m x 4.18m 19'7" x 13'9"  
Dressing Area 2.29m x 2.24m 7'6" x 7'4"  
Bedroom 2 5.85m x 4.32m 19'2" x 14'2"  
Bedroom 3 5.85m x 2.77m 19'2" x 9'1"



## The Hodgson – Plot 30

- 2 double bedroom, 2 bathroom apartment
- Spacious, dual aspect open plan kitchen/living/dining room
- Dressing area and ensuite to master bedroom • Ensuite to bedroom 2
- Separate utility with washer dryer • Separate WC

Total Floor Area 134 sq m 1,442 sq ft



### SECOND FLOOR

Kitchen/Living/Dining 8.26m x 6.06m 27'1" x 19'11"  
Utility 3.17m x 1.96m 10'5" x 6'5"  
Master Bedroom 7.04m x 3.88m 23'1" x 12'9"  
Dressing Area 2.52m x 1.89m 8'3" x 6'2"  
Bedroom 2 4.46m x 3.34m 14'8" x 10'11"

The room sizes shown in this brochure are taken to the widest points in each room: wall to wall tolerance +/-5% is allowed, external finish and windows may vary on certain plots. Some future plans may vary slightly from those shown on these pages. Please check with your Sales Advisor.